

# Dual Guard ULT Freezer



MD-86L818BS

**Dual Cooling&Dual Guard**  
Two independent systems ensure uninterrupted operation,even if one fails; Dual systems reduce individual load, extending overall lifespan

**Super & Even Cooling**  
210Mins Rapid Cooling( 25°C→-81°C)&±5 Uniformity.

**Smart Inverter**  
Smart Inverter auto-adjusts compressor speed to load changes.

**Energy-Saving & Low Noise**  
14.3KW.h/24h Power Consumption & 51dB Low Noise.

## ■ Structure Features

**1 Multi-layer Sealing Structure**  
Multi-layers gaskets provide a tight seal between the inner doors and outer door, reducing heat exchange and retaining the inner temperature better when there is power failure.

**2 VIP PLUS Design**  
Provides up to 30% more storage capacity than a conventionally insulated freezer, without increasing the footprint. A glass fibre core provides advanced thermal properties.

**3 USB Port**  
Enables users to download historical temperature data for compliance/auditing purposes.

**4 10.1 inch LCD Touch Screen**  
Visual management, real time display inner temperature, alarms, temperature curves and other data.



**5 Lever Handle Design**  
Ingenious handle design helps you to open and close door easier. Lockable handle safeguards your precious samples. Padlock can also be added for extra sample safety.

**6 Relief Ports**  
It allows users to re-open the main door quickly when entering ,rust-proof, freeze-free.

**7 Narrow Door Design**  
The freezer can pass through an 750mm wide door when the door is open.

### Application, Rating, & Electrical Data

Application	ULT freezer
Storage Volume (L/Cu.ft)	838//29.59
Temperature Range	-40°C to -86°C
Default Set Point	-81°C
Power	220-240-V /50Hz/60Hz
Current	9.5A
Power Cord Length	1.7m
Certification	CE
Door type	Solid door
Application Environment	Non-corrosive, non-flammable, non-explosive
Ambient Operating Temperature	10°C-32°C

### Refrigeration

Refrigeration System	Dual Inverter Cooling
Compressor	Hermetic, variable speed
Condenser Type	Air cooling
Expansion Device	Capillary tube
Evaporator Type	Built-in
Defrost Method	Manual defrosting
Refrigerant	Mix refrigerant

### Controller / Configuration Settings

Display screen	10.1"LCD Touch screen
Controller Type	Microprocessor
Security	Lockable door, password protected settings
Control Sensor	PT1000, stainless steel
Communication Ports	USB, Remote alarm contacts
Power Failure Alarm	Yes
High/Low Alarms	Yes, fully adjustable
Door Ajar Alarm	Yes
Download	Yes, via USB, PDF
Temperature Log	Yes, download via USB
Battery Back-up	Yes, 10 hr display and alarm back-up   Rechargeable 12V, lead acid

### Performance Characteristics (normal operating conditions)

Uniformity   (°C)	±5.0
Recovery to -75°C after 1 min door opening   (min)	49
Temperature fluctuation   (°C)	≤3.5
Energy consumption   (kWh/day)	14.3
Noise emission   (dB)	51
Heat rejection   (BTU/hr)	3314
Pull-down time to -81°C   (min)	210

### Typical Temperature Map

	test 1	test 2	test 3	test 4	test 5	test 6	test 7	test 8	test 9
Avg	-81.39	-81.35	-82.76	-82.28	-82.77	-82.42	-81.39	-81.98	-82.24
Max	-78.60	-78.70	-80.80	-80.00	-80.60	-80.30	-80.00	-80.80	-81.00
Min	-83.50	-83.50	-84.60	-84.20	-84.50	-84.20	-82.80	-83.20	-83.50

Midea Biomedical, Trademarks are the property of their respective owners. Drawings are not for engineering use, and specifications may change. Not all products are available in all countries, so please check with your local sales representative for details.

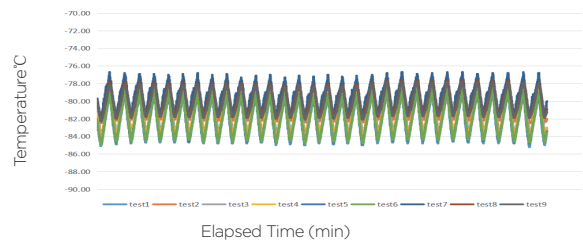


### Dimensions and Construction

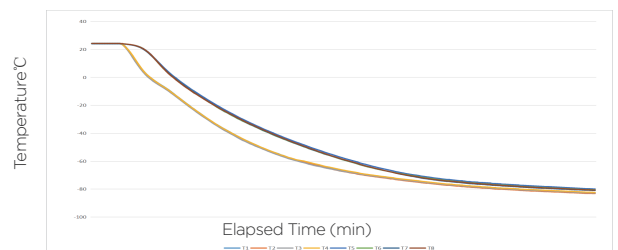
Interior (w*d*h)	885*720*1310 mm
Exterior (w*d*h)	1175*995*1980 mm
Access Port	2 Access Port- for external monitoring probe(s) (25 mm diameter)
shelf	3   87 kg max capacity
Wheels	4 Swivel Casters + 2 Leveling Feet
Net Weight	332 kg
Gross Weight	401 kg

All performance data from 838L ULT freezer, 25 ambient, -81°C

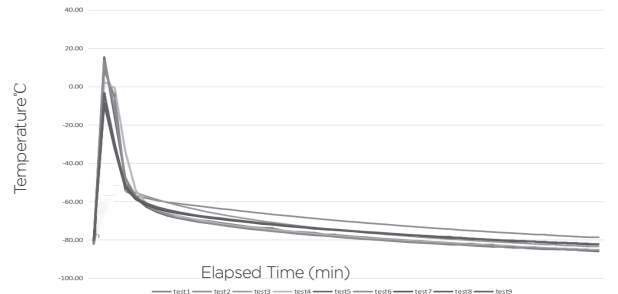
#### Uniformity



#### Cooling Speed



#### DOR 1 minute



#### Temperature recover curve

