



MD-86L458S



Reliable Sample Storage

High temperature uniformity;
Imported world-famous components.



Double Door Design

Four independent inner door design reduce heat loss.



Multi-level Alarms

High, low temperature, sensor error, power failure,
high ambient alarm, door open alarm.



Fast Cooling

High efficiency cooling fans and compressors.

Structure Features

1 Multi-layer Sealing Structure

Multi-layers gaskets provide a tight seal between the inner doors and outer door, reducing heat exchange and retaining the inner temperature better when there is power failure.

2 VIP PLUS Design

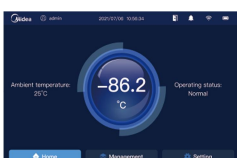
Provides up to 30% more storage capacity than a conventionally insulated freezer, without increasing the footprint. A glass fibre core provides advanced thermal properties.

3 USB Port

Enables users to download historical temperature data for compliance/auditing purposes.

4 10.1 inch LCD Touch Screen

Visual management, real time display inner temperature, alarms, temperature curves and other data.



5 Lever Handle Design

Ingenious handle design helps you to open and close door easier. Lockable handle safeguards your precious samples. Padlock can also be added for extra sample safety.

6 Relief Ports

It allows users to re-open the main door quickly when entering, rust-proof, freeze-free.

7 Narrow Door Design

The freezer can pass through an 750mm wide door when the door is open.

Application, Rating, & Electrical Data

| | |
|-------------------------------|---|
| Application | ULT freezer |
| Storage Volume (L/Cu.Ft) | 458/16.17 |
| Temperature Range | -40°C to -86°C |
| Default Set Point | -81°C |
| Power | 220-240~V/50Hz 220-240~V/60Hz |
| Current | 5.9A 5.9A |
| Power Cord Length | 1.7m |
| Certification | CE |
| Door type | Solid door |
| Application Environment | Non-corrosive, non-flammable, non-explosive |
| Ambient Operating Temperature | 10°C-32°C |

Refrigeration

| | |
|----------------------|-------------------|
| Refrigeration System | Self-cascade |
| Compressor | Hermetic |
| Condenser Type | Air cooling |
| Expansion Device | Capillary tube |
| Evaporator Type | Built-in |
| Defrost Method | Manual defrosting |
| Refrigerant | Mix refrigerant |

Controller / Configuration Settings

| | |
|---------------------|--|
| Display screen | 10.1"LCD Touch Screen |
| Controller Type | Microprocessor |
| Security | Lockable door, password protected settings |
| Control Sensor | PT1000, stainless steel |
| Communication Ports | USB, Remote alarm contacts |
| Power Failure Alarm | Yes |
| High/Low Alarms | Yes, fully adjustable |
| Door Ajar Alarm | Yes |
| Download | Yes, via USB, PDF |
| Temperature Log | Yes, download via USB |
| Battery Back-up | Yes, 10 hr display and alarm back-up Rechargeable 12V, lead acid |

Performance Characteristics (normal operating conditions)

| | |
|--|-------------------------------|
| Uniformity (°C) | ±5.0 |
| Recovery to -75°C after 1 min door opening (min) | 26 |
| Temperature fluctuation (°C) | ≤1.1 (Copper Mass Simulators) |
| Energy consumption (kWh/day) | 9.5 10 |
| Noise emission (dB) | 46 |
| Heat rejection (BTU/hr) | 3521 |
| Pull-down time to -81°C (min) | 267 300 |

Typical Temperature Map

| | test 1 | test 2 | test 3 | test 4 | test 5 | test 6 | test 7 | test 8 | test 9 |
|-----|--------|--------|--------|--------|--------|--------|--------|--------|--------|
| Avg | -81.40 | -81.75 | -81.66 | -82.61 | -82.93 | -82.46 | -81.75 | -82.13 | -81.26 |
| Max | -78.80 | -79.00 | -78.60 | -81.20 | -81.30 | -80.80 | -80.60 | -81.10 | -80.20 |
| Min | -83.20 | -83.70 | -83.70 | -84.10 | -84.40 | -84.00 | -83.00 | -83.40 | -82.60 |

Midea Biomedical, Trademarks are the property of their respective owners. Drawings are not for engineering use, and specifications may change. Not all products are available in all countries, so please check with your local sales representative for details.

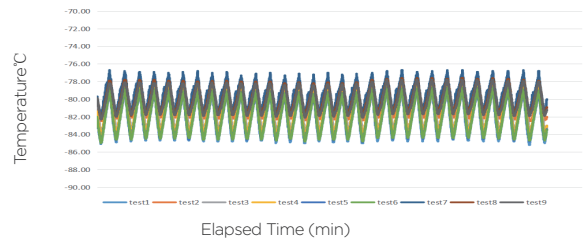


Dimensions and Construction

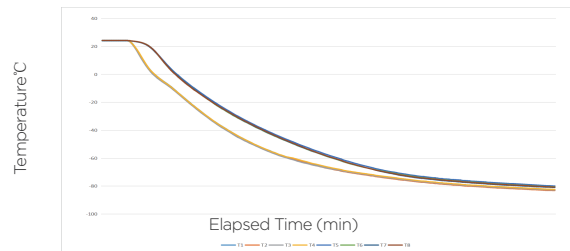
| | |
|------------------|--|
| Interior (w*d*h) | 595*580*1310 mm |
| Exterior (w*d*h) | 885*855*1980 mm |
| Access Port | 2 Access Port- for external monitoring probe(s) (25 mm diameter) |
| shelf | 3 49 kg max capacity |
| Wheels | 4 Swivel Casters + 2 Leveling Feet |
| Net Weight | 237 kg |
| Gross Weight | 292 kg |

All performance data from 458L ULT freezer, 25 ambient, -81°C

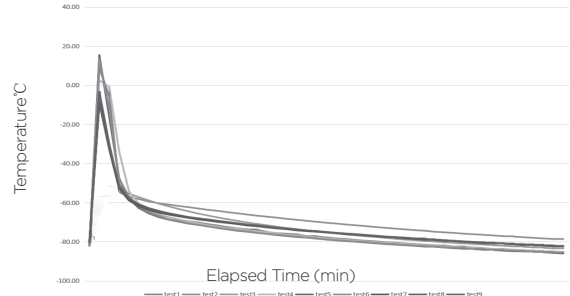
Uniformity



Cooling Speed



DOR 1 minute



Temperature recover curve

