

2-8°C Vertical Pharmacy Refrigerator



MC-5L316



Top Cooling System



Eco-Efficient Cooling

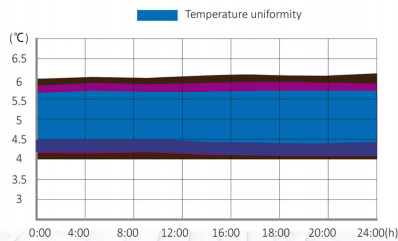
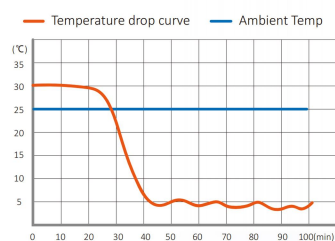
R600a (HC)refrigerant:Near-zero GWP
Energy consumption: $\leq 2.5\text{kWh}/24\text{h}$



Precision Temp. Control

Uniformity of $\pm 1.5^{\circ}\text{C}$: Ensures sample integrity throughout the chamber

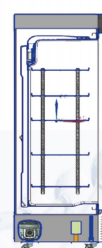
Typical Performance Characteristics at 25 °C Ambient



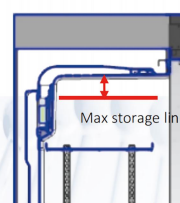
Dual Display



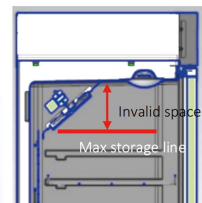
Built-in Air Duct



Built-in air duct



Traditional air duct

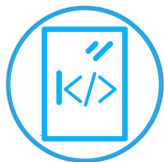


VS



Multiple Alarm

Multi-tier alerts (audible/visual/remote) with power/sensor/door/high/low temp./battery monitoring



Self-closing Door

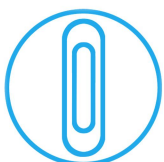


Electrically Heated Glass Door

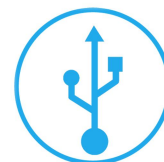


Forced-Air Cooling

No Frost

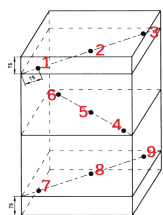


Built-in Handle



Std: USB | Opt: RS485

Application, Rating, & Electrical Data	
Application	Pharmacy refrigerator
Storage Volume (L/Cu.Ft)	316/11.16
Temperature Range	2°C to 8°C/35.6°F to 46.4°F
Default Set Point	+5°C
Power Supply	115 ~ V/60Hz 220-240 ~ V/50Hz 220-240 ~ V/60Hz
Current	2.5A 1.5A 1.5A
Power Cord Length	1.7m
Certification	CE/UL/ ENERGY STAR/ NSF/ANSI 456
Door type	Electrically Heated Glass Door
Application Environment	Non-corrosive, non-flammable, non-explosive
Ambient Operating Temperature	+16°C to +32°C
Refrigeration	
Refrigeration System	Forced-air/hydrocarbon Refrigerant
Compressor	Hermetic
Condenser Type	Air-cooled
Expansion Device	Cap tube
Evaporator Type	Fin and tube
Defrost Method	Automatic
Refrigerant	R600a
Controller / Configuration Settings	
Display screen	LED
Controller Type	Microprocessor
Security	Lockable door, password protected settings
Control Sensor	NTC, stainless steel
Communication Ports	USB, Remote alarm contacts
Power Failure Alarm	Yes
High/Low Alarms	Yes, fully adjustable
Door Ajar Alarm	Yes, fully adjustable
Min/Max Temperature	Yes, display and reset
Download	Yes, via USB. PDF
Temperature Log	Yes, download via USB
Temperature Monitoring Ballast	Yes
Battery Back-up	Yes, 16 hr display and alarm back-up Rechargeable 12V, lead acid
Dimensions and Construction	
Interior (w*d*h)mm	500*464*1343 mm
Exterior (w*d*h)	595*603*1920 mm
Access Port	Access Port- for external monitoring probe(s) (25 mm diameter)
Shelves	5 35 kg max capacity/drawer
Wheels	4, The front two can be stopped
Net Weight	72 kg
Gross Weight	81 kg



Location of test probes

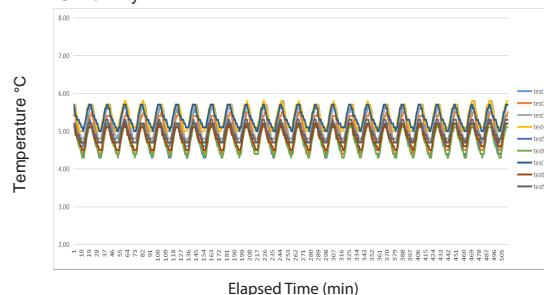
Typical Temperature Map

	test1	test2	test3	test4	test5	test6	test7	test8	test9
Avg	4.88	5.24	5.15	4.13	4.32	4.92	4.71	4.78	5.37
Max	5.30	5.60	5.50	4.80	4.70	5.20	5.00	5.10	5.70
Min	4.40	4.90	4.70	3.50	4.00	4.60	4.40	4.40	5.10

Performance Characteristics (normal operating conditions)	
Uniformity (°C)	±1.5
Recovery to 8°C after 1 min door opening (min)	9
Temperature fluctuation (°C)	< 2
Energy consumption (kWh/day)	CE/2.5 UL/2.5
Noise emission (dB)	CE/52 UL/60
Heat rejection (BTU/hr)	870
Pull-down time to 6°C (min)	60

All performance data from 316L refrigerator, 25 ambient, 5.0°C

Uniformity



Cooling Speed

